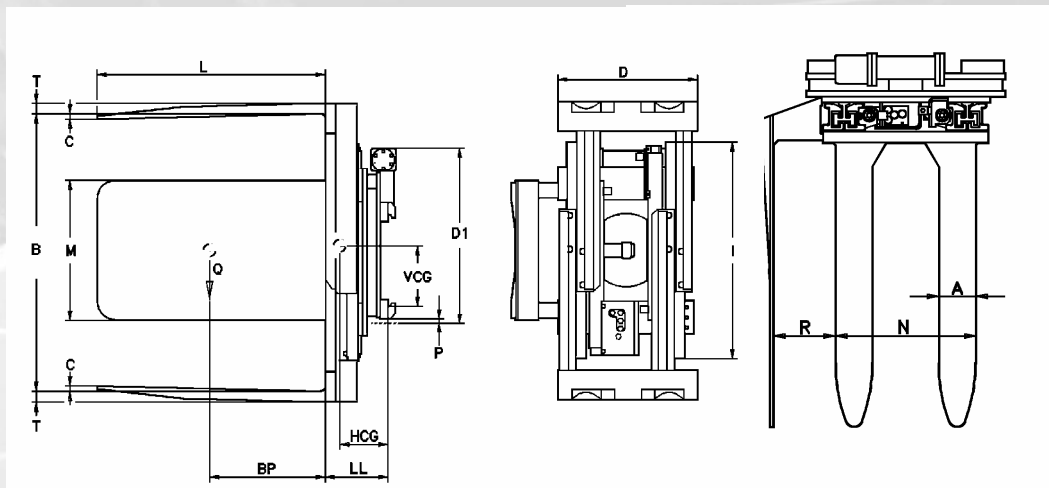


Invert-A-Pallet Load Turning Clamps Models KG-EF

- Based on rotating clamp body with endless 360 ° rotation.
- Used for transferring goods from production pallets to disposable ones.
- Equipped with two pairs of forks welded to the arm carriers.
- Available with side plate to stabilize the load during rotation.
- Excellent visibility.
- Reduced weight, effective thickness and center of gravity.



Invert-A-Pallet Load Turning Clamps Models KG-EF



Model	Capacity	Load Centre	Opening Range	Fork Dimensions	Frame Width	Minimum Carriage Width	Height	Rotator Height	Weight	Centre of Gravity Horizontal	Centre of Gravity Vertical	Effective Thickness	Arms Toe-in	Side Plate Height	Fork External Width	Side Plate Distance	Ground Clearance	Mounting Class
	Q	BP	B	LxAxT	I	FL	D	D1	W	HCG	VCG	LL	C	M	N	R	P	ISO
	kg	mm	mm	mm	mm	mm	mm	mm	kg	mm	mm	mm	mm	mm	mm	mm	mm	2328
With fixed side plate, fixed forks																		
KG E2 F4A	1000	500	600-1830	1000x100x35	930	690	613	711	590	290	261	271	13	600	560	220	9	2A
KG E3 F5A	1400	500	650-1980	1100x130x40	970	690	613	711	700	349	272	285	14	600	560	220	9	2A
KG E4 F6A	2200	500	630-1960	1200x130x50	970	750	715	912	920	380	310	321	15	600	560	220	20	3A
Without side plate, fixed forks																		
KG F2 F4A	1000	500	600-1830	1000x100x35	930	690	613	711	510	250	257	271	13	-	560	-	9	2A
KG F3 F5A	1400	500	650-1980	1100x130x40	970	690	613	711	610	315	268	285	14	-	560	-	9	2A
KG F4 F6A	2200	500	630-1960	1200x130x50	970	750	715	912	820	348	307	321	15	-	560	-	20	3A

Notes:

Models KG-EF with fixed side plate.
Models KG-FF without side plate.

Standard equipment:

Two hydraulic functions required.

On request:

Oscillating forks.
Separate sideshift.
Valve for independent arm control.